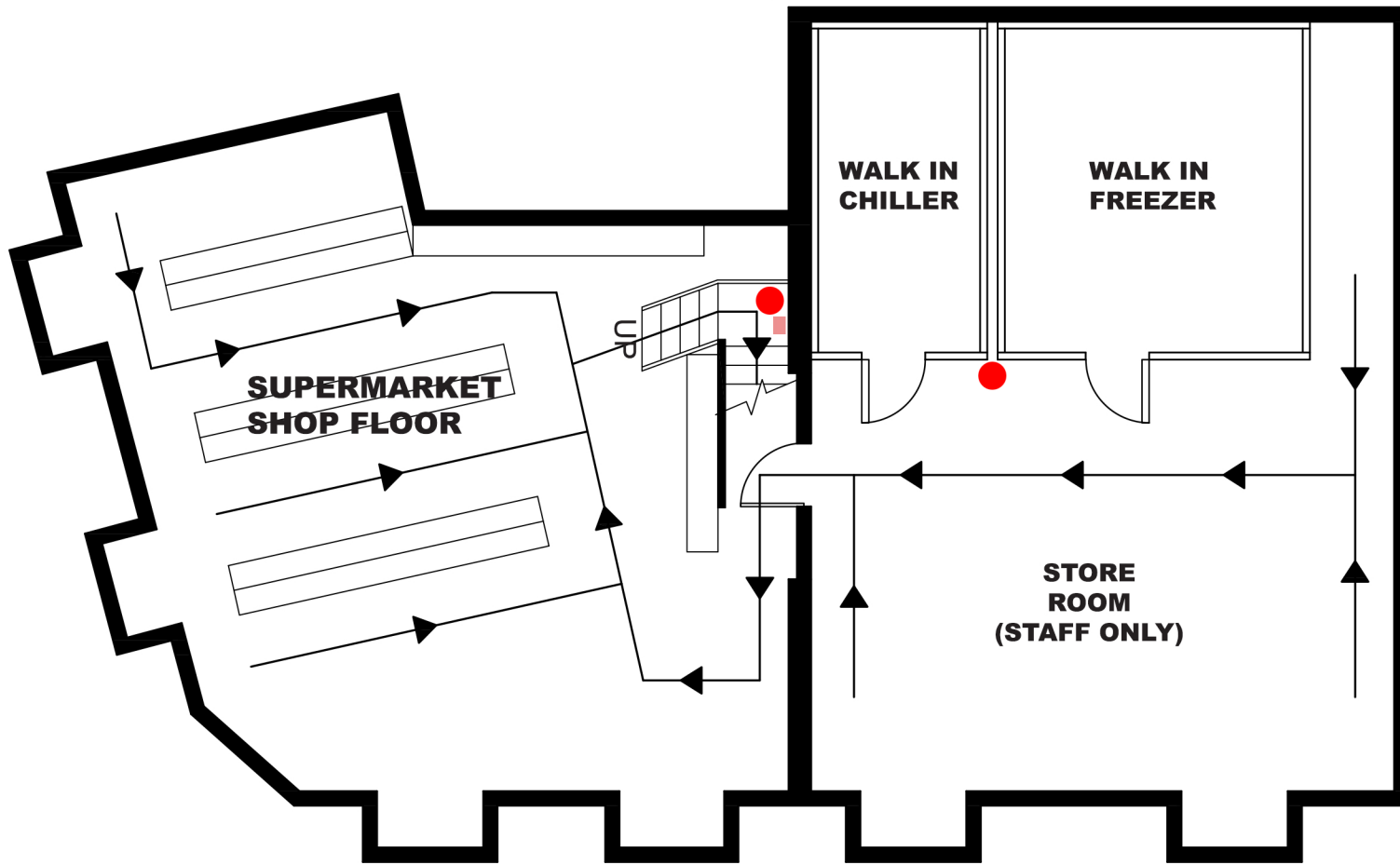


KEY:

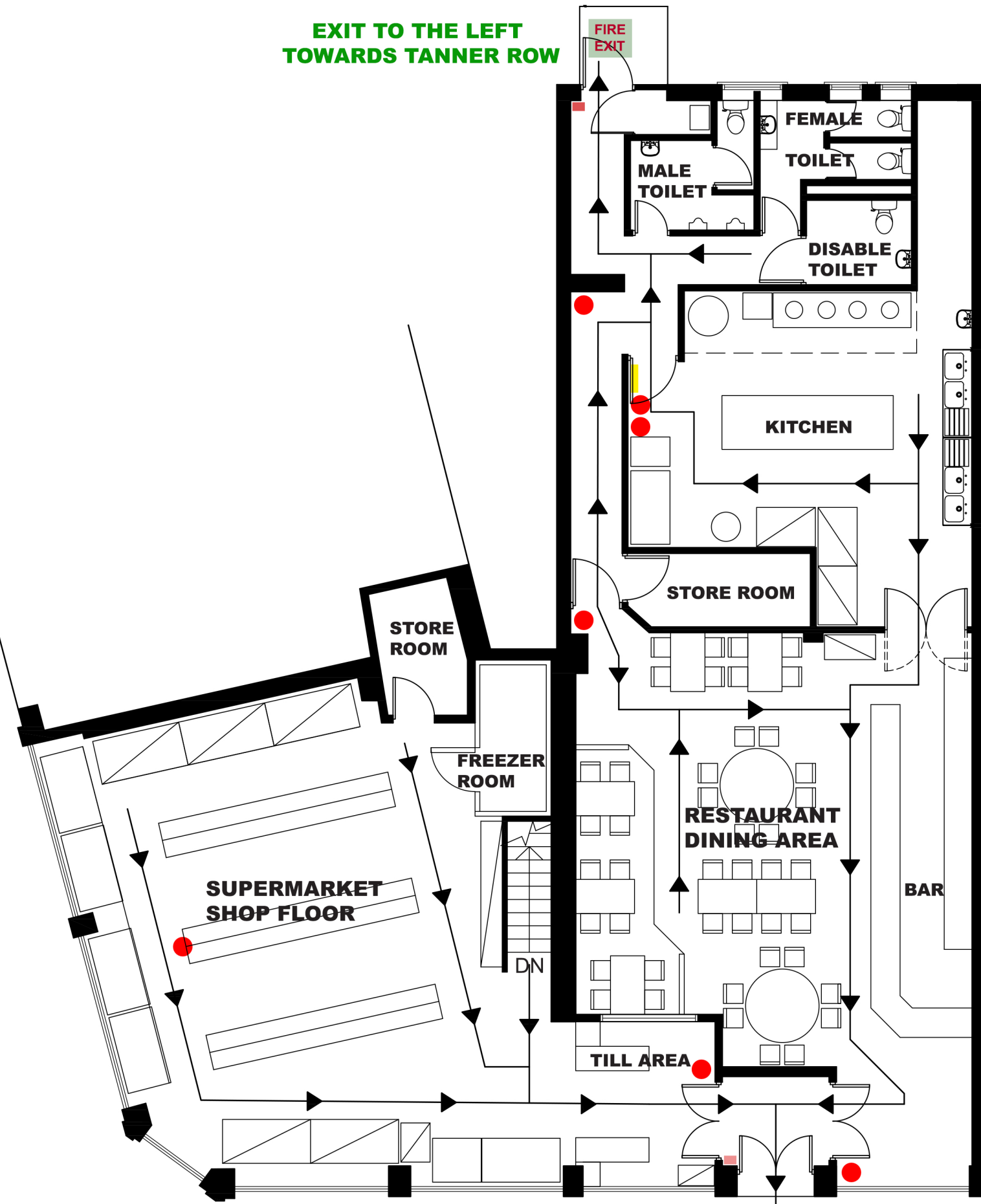
- FIRE EXTINGUISHER
- FIRE ALARM CALL POINT
- ▬ FIRE BLANKET
- ↑ FIRE EXIT ESCAPE ROUTE
- FIRE EXIT FIRE EXIT

**ASSEMBLY POINT
OUTSIDE
THE SOCIETY BAR
PEDESTRIAN AREA
AT TANNER ROW**

**EXIT TO THE LEFT
TOWARDS TANNER ROW**



BASEMENT PLAN



**EXIT TO
GEORGE HUDSON STREET**

GROUND FLOOR PLAN

